

HILLTOP GARDENS

LYING IN SECTION 18, TOWNSHIP 42 SOUTH, RANGE 43 EAST
CITY OF PALM BEACH GARDENS, PALM BEACH COUNTY, FLORIDA.
(AUGUST, 2021)

166

AREA TABULATION

| | | |
|----------|-----------------------|---------------|
| PARCEL 1 | 860,546 SQUARE FEET | 19.7554 ACRES |
| PARCEL 2 | 148,598 SQUARE FEET | 3.4113 ACRES |
| TOTAL | 1,009,144 SQUARE FEET | 23.1667 ACRES |

RECORD PLAT PREPARED BY:

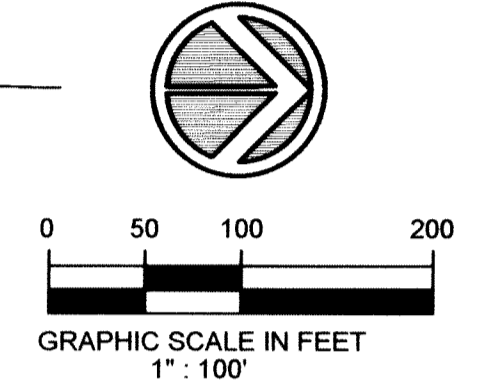
STE Sun-Tech
Engineering Inc.
Engineers - Planners - Surveyors

4577 Nob Hill Road, Suite 102
Sunrise, FL 33351
www.suntecheng.com
Certificate of Auth. #7097/LB 7019
Phone (954) 777-3123
Fax (954) 777-3114

STATE OF FLORIDA } ss
COUNTY OF PALM BEACH }
THIS PLAT WAS FILED FOR RECORD
AT _____ THIS _____
DAY OF _____, 20____, AND DULY
RECORDED IN PLAT BOOK _____
ON PAGES _____ THROUGH _____

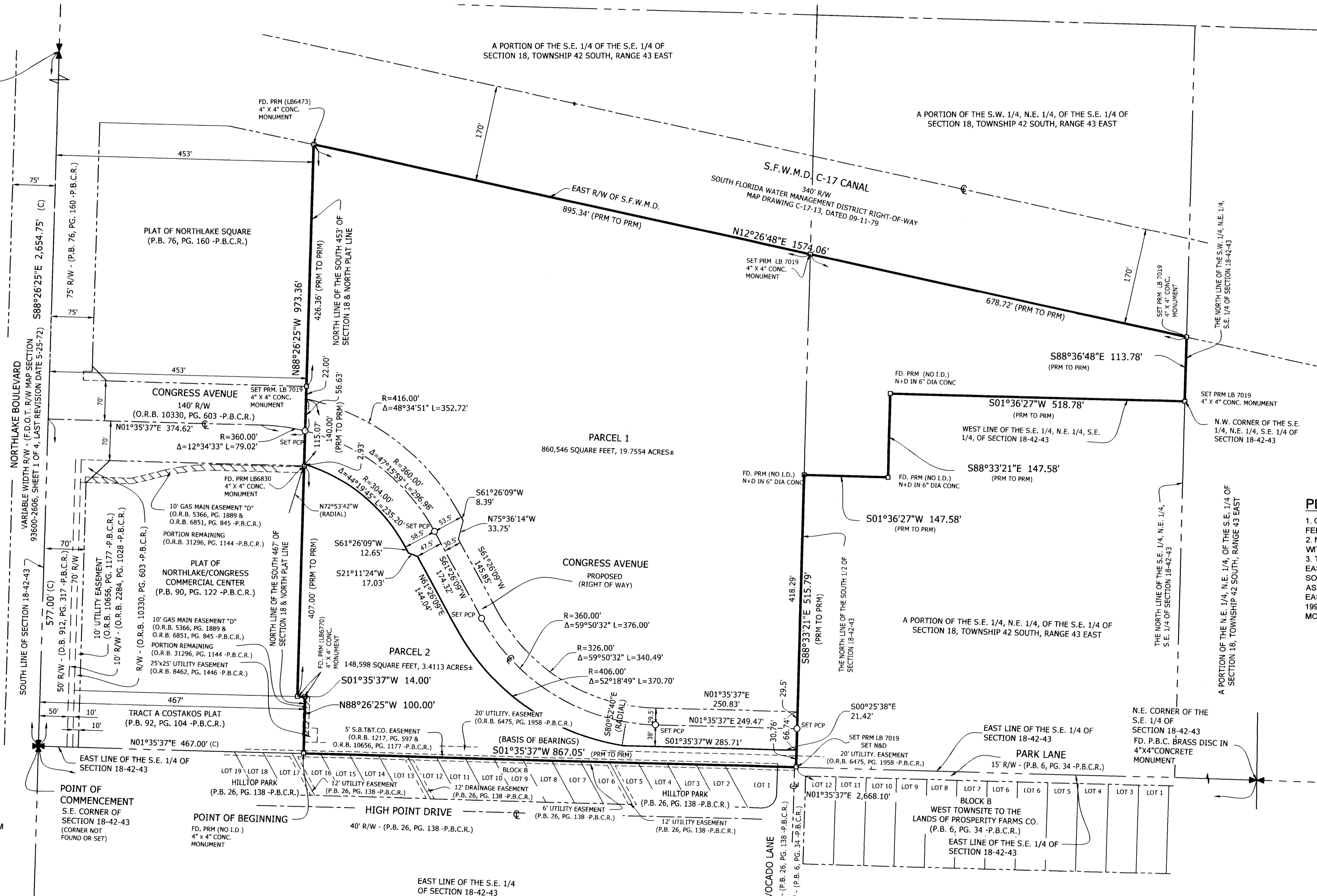
JOSEPH ABRUZZO
CLERK OF THE CIRCUIT COURT
& COMPTROLLER
BY: _____

"NOTICE" THIS PLAT, AS RECORDED IN ITS GRAPHIC FORM IS THE OFFICIAL DEPICTION OF THE SUBDIVIDED LANDS DESCRIBED HEREIN AND WILL IN NO CIRCUMSTANCES BE SUPPLANTED IN AUTHORITY BY ANY OTHER GRAPHIC OR DIGITAL FORM OF THE PLAT. THERE MAY BE ADDITIONAL RESTRICTIONS THAT ARE NOT RECORDED ON THIS PLAT THAT MAY BE FOUND IN THE PUBLIC RECORDS OF THIS COUNTY.



LEGEND

- (C) AS CALCULATED
- CL CENTERLINE
- DB DEED BOOK
- ID IDENTIFICATION
- R RADIUS
- CA CENTRAL ANGLE
- L ARC LENGTH
- FD FOUND
- FP&L CO. FLORIDA POWER & LIGHT COMPANY
- ID IDENTIFICATION
- IR IRON ROD
- LB LICENSED BUSINESS
- LC LOT CORNER
- OR.B. OFFICIAL RECORDS BOOK
- P.B.C. PALM BEACH COUNTY
- P.B.C.R. PALM BEACH COUNTY PUBLIC RECORDS
- P.B. PLAT BOOK
- PC PERMANENT CONTROL POINT
- SET PCP O SET NAIL & ALUMINUM DISC LB7019
- PC PAGE
- PRM PERMANENT REFERENCE MONUMENT
- FD.PRM FOUND 6"x6" CONCRETE MONUMENT
- PRM SET 4"x4"x24" CONCRETE MONUMENT WITH ALUMINUM DISC NO. 7019 (UNLESS NOTED OTHERWISE)
- P.S.M. PROFESSIONAL SURVEYOR & MAPPER
- R/W RIGHT-OF-WAY
- S.F.W.M.D. SOUTH FLORIDA WATER MANAGEMENT DISTRICT
- W WITHH



PLAT NOTES:

1. GROSS AREA OF PLATTED LANDS IS 1,009,144 SQUARE FEET (23.1667 ACRES), MORE OR LESS
2. NO BUILDINGS OR STRUCTURES SHALL BE PLACED WITHIN EASEMENTS.
3. THE BEARINGS SHOWN HEREON ARE BASED ON THE EAST LINE OF THE S.E. 1/4 OF SECTION 18, TOWNSHIP 42 SOUTH, RANGE 43 EAST, BEARING SOUTH 01°35'37" WEST AS PER THE FLORIDA STATE PLANE COORDINATE SYSTEM, EAST ZONE, NORTH AMERICAN DATUM OF 1983 WITH THE 1990 ADJUSTMENT. THE SAME BEING AN ESTABLISHED AND MONUMENTED LINE.